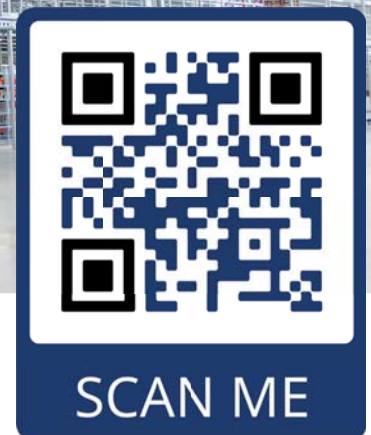




# STEEL SYSTEM STRUCTURES

---



[ANERA.EU](https://anera.eu)



# STEEL SYSTEM STRUCTURES

---

Anera is a specialist for modular steel constructions in logistics, industry and goods storage. Our projects range from small-scale mezzanine floors to large multi-layer mezzanines, industrial platforms and special products. Every year we design, produce and install more than 300,000 m<sup>2</sup> of mezzanines and structures at all scales worldwide.

Our unique self-developed steel construction system, based on cold-formed steel, makes it possible to create highly efficient constructions. Where necessary combined with heavier traditional elements (hybrid construction system), this ensures less material use, lower transport and assembly costs and increased durability compared to traditional construction methods. The modular design and production methodology guarantees fast delivery, high quality and delivery reliability.

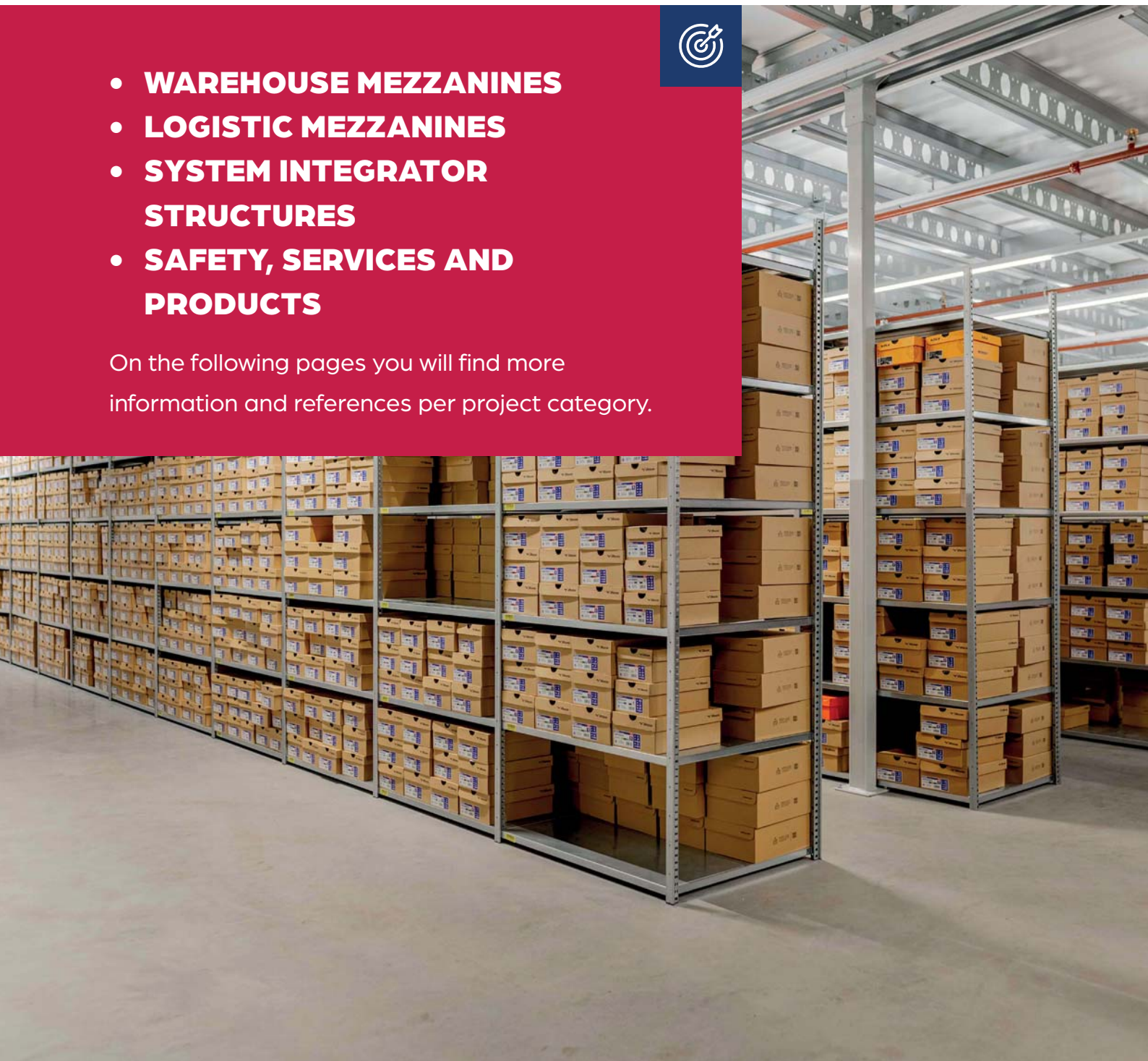
All disciplines required to realize a project, such as advice, design, production and installation, can be provided by our own staff. Our structures are custom-made and transported from our factory in the south of the Netherlands. Efficient and clean installation follows on location. Thanks to this combination, we can quickly and reliably meet every demand while relieving you of all your worries.

## PROJECTS

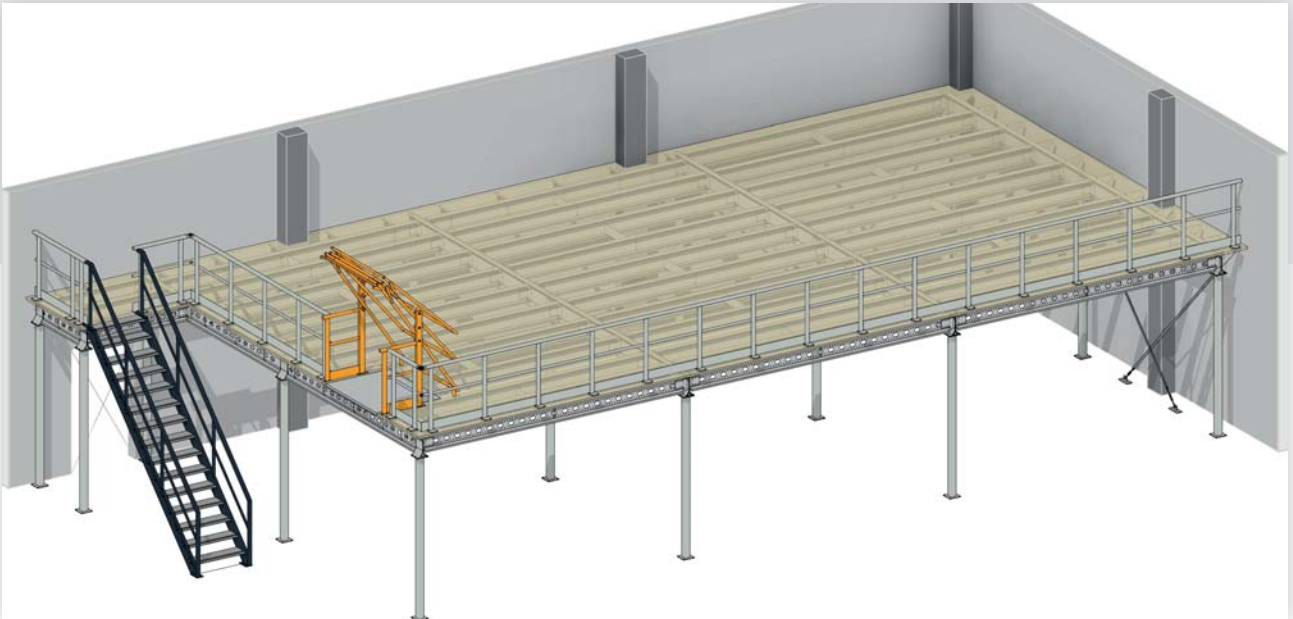
Anera is a project supplier. For us, this means that we view every delivery as a project and create a design that meets the wishes of our customers and the situation on site. We divide our projects into the following categories:

- **WAREHOUSE MEZZANINES**
- **LOGISTIC MEZZANINES**
- **SYSTEM INTEGRATOR STRUCTURES**
- **SAFETY, SERVICES AND PRODUCTS**

On the following pages you will find more information and references per project category.



# PROJECTS : WAREHOUSE MEZZANINES



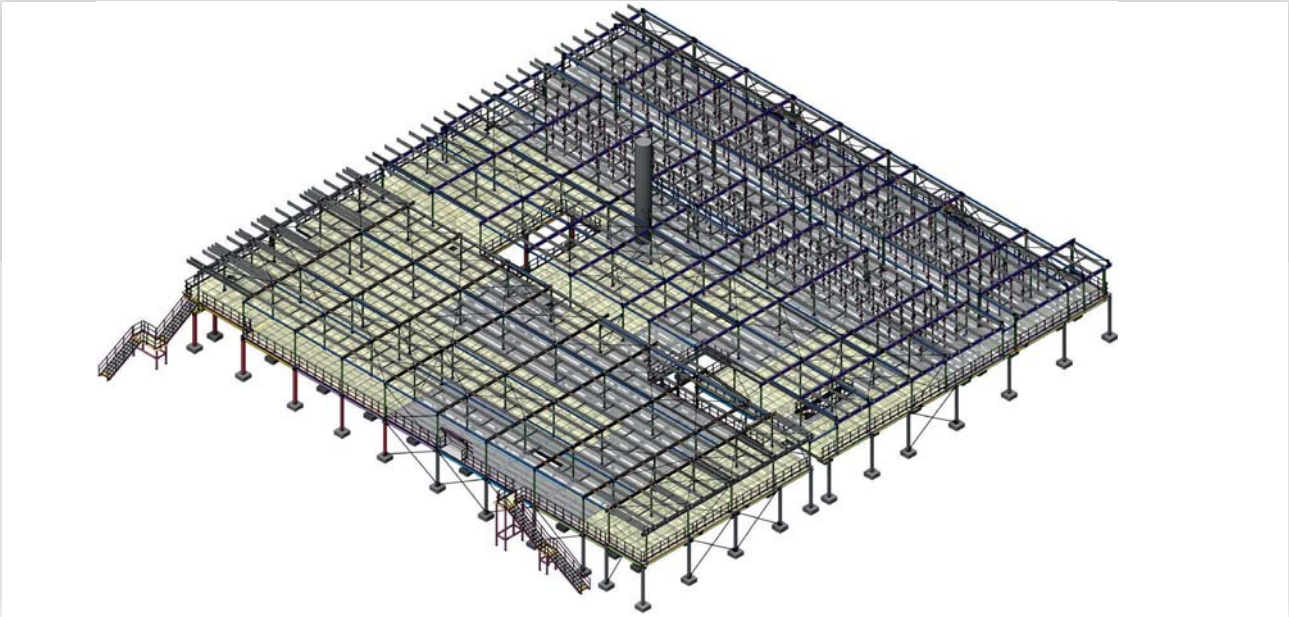
Anera's lightweight steel structures are ideally suited for mezzanine floors in existing buildings. Our product is based on a proprietary modular construction system consisting of lightweight prefabricated elements. This makes it possible to realize a full-fledged floor structure in a short time, cost-effectively and in limited space. Each project is designed, produced and installed according to the specifications and dimensions of the building and application. From small to large, for every desired application. Our team can design a solution for you.

**DUE TO OUR LONG EXPERIENCE IN THE MARKET, WE HAVE GAINED A LOT OF EXPERIENCE WITH:**

- ✓ Storage mezzanines
- ✓ Floors with fixed workplaces
- ✓ Mezzanine floors with office spaces
- ✓ Sports and activities mezzanines
- ✓ Maintenance platforms
- ✓ Floors used in catering and shops (public spaces)



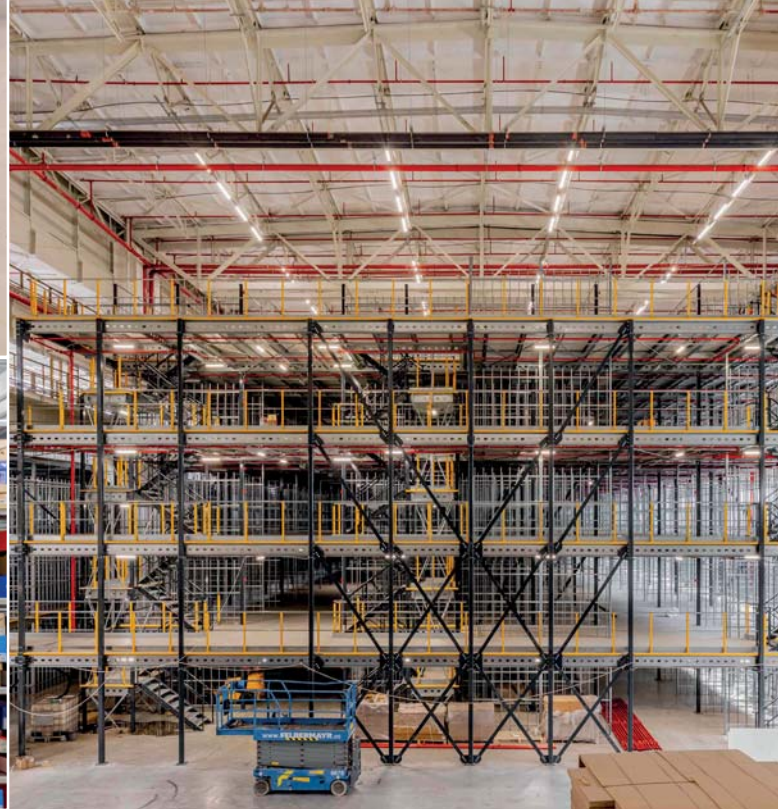
# PROJECTS : LOGISTIC MEZZANINES



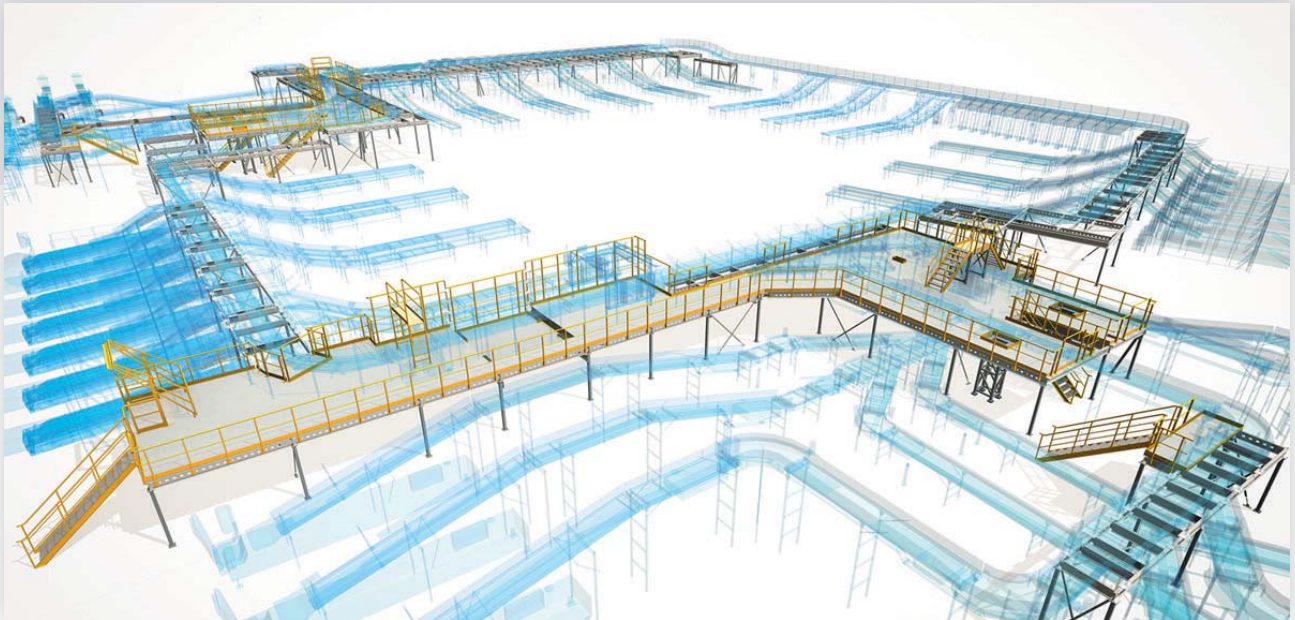
For logistic buildings and distribution centers, our system steel constructions are extremely suitable for creating extra space at low investment costs and in short lead times. Use the potential of your building by using its height! The structures we design are self-supporting, which prevents difficult design processes with structural integrity to your building structure. Due to the demountable nature of our structures, they retain a residual value even after use. The structures we build in logistics halls are often combined with pallet racking, shelving or automation. Each project is designed, produced and installed according to the specifications and dimensions of the building and application.

## SECTORS IN WHICH WE ARE OFTEN ACTIVE:

- ✓ Clothing storage and sorting
- ✓ Webshop order picking warehouses
- ✓ 3PL / Fulfilment centers
- ✓ Tire storage
- ✓ Self-storage buildings



# PROJECTS : SYSTEM INTEGRATOR STRUCTURES

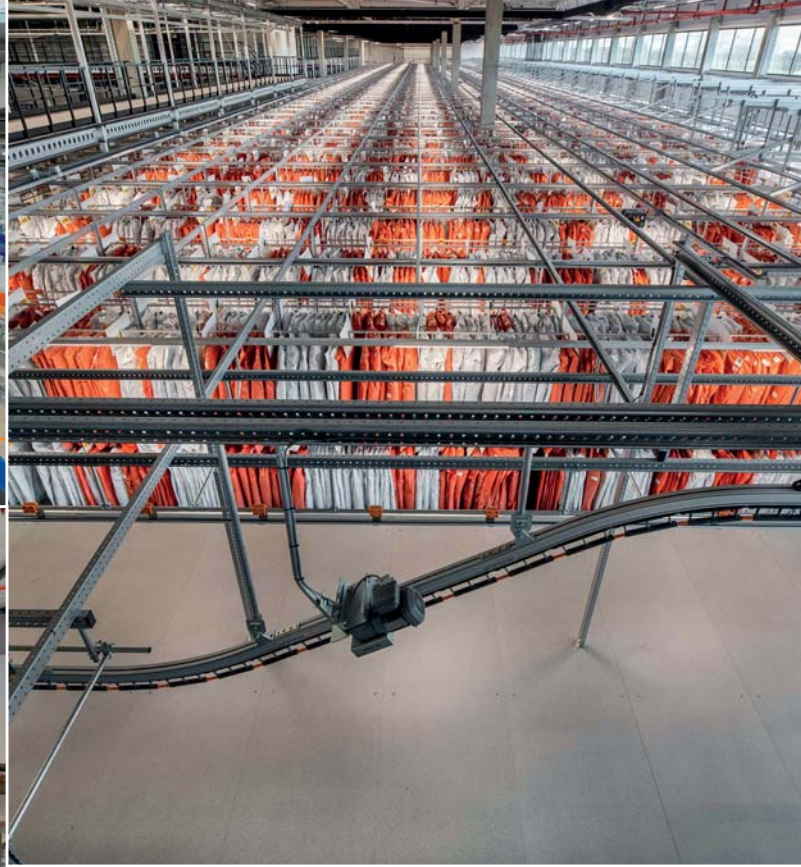


The automation of logistics processes requires a lot of investment. That is why it is extra important that the volume of your building is optimally used by this automation, in order to maximize the return on your investment. Anera specializes in custom design of system steel structures to support your logistics systems. This includes maintenance platforms for conveyor systems, walkways and catwalks over automation, or larger platforms to raise the entire systems to give your ground operation the optimal space.

**BECAUSE WE HAVE BEEN ACTIVELY WORKING WITH SYSTEM INTEGRATORS SINCE 2004, WE HAVE A LOT OF EXPERIENCE WITH WELL-KNOWN AUTOMATION SOLUTIONS SUCH AS:**

- ✓ Pouch and pocketsorters
- ✓ Goods to persons AMR mezzanines
- ✓ Good on hanger systems
- ✓ Sorting AMR mezzanines
- ✓ (shoe) sorters and conveyer systems
- ✓ Baggage handling systems
- ✓ AutoStore
- ✓ Shuttle rack front-zone mezzanines





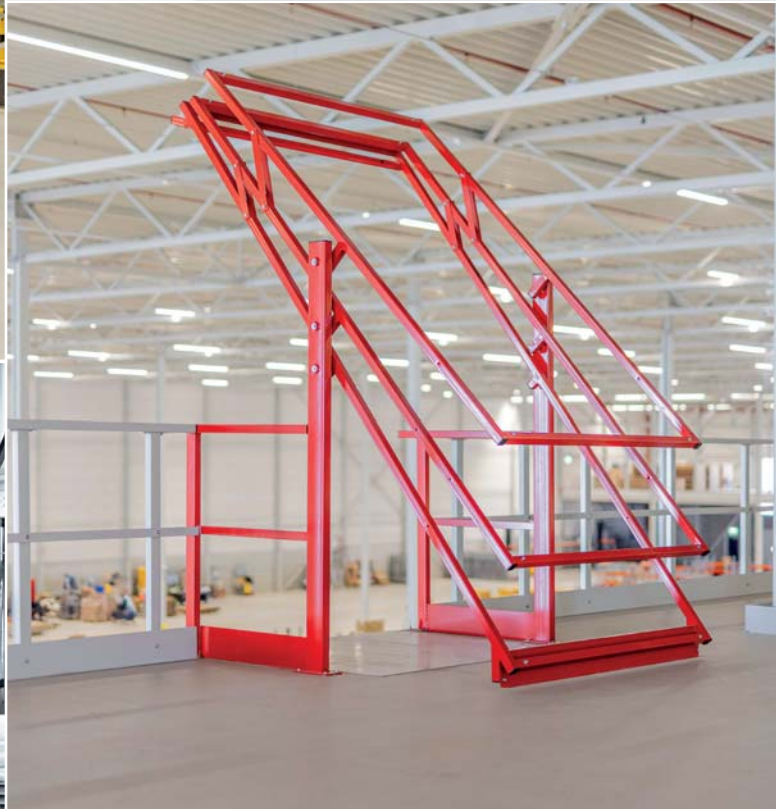
# PROJECTS : SAFETY, SERVICES AND PRODUCTS



Risk situations occur wherever people work. Good working conditions and work equipment are therefore inextricably linked to modern warehouse management. Warehouses and logistics centers also contain valuable goods and automation systems that need to be protected. To provide a solution for this, Anera supplies inspections, safety and access products at project level to increase the quality and safety of your warehouse.

## WHAT SERVICES AND PRODUCTS WE CAN OFFER :

- ✓ Testing and inspections
- ✓ Stairs and catwalks
- ✓ Driveway and column protection
- ✓ Step-overs and walk-overs
- ✓ Pallet handling and access systems





# ABOUT ANERA

---

At Anera we believe it is important to support our customers from idea to delivery. If you have an issue for which we can offer a solution, we start by creating a sketch design and budget. We do this without any obligation and from a technical perspective, with an eye for the economic side of course. After you are convinced of the solution and award us the project, our engineering team, consisting of project managers, project engineers, 3D modelers and structural

engineers, will work to develop your project to a high technical level and in accordance with the applicable laws and regulations. After approval of the design and possible permitting, our work preparation team ensures that the materials are put into production. Parallel to production, our assembly coordinators plan the right assembly teams with tools and prepare the safety documents.

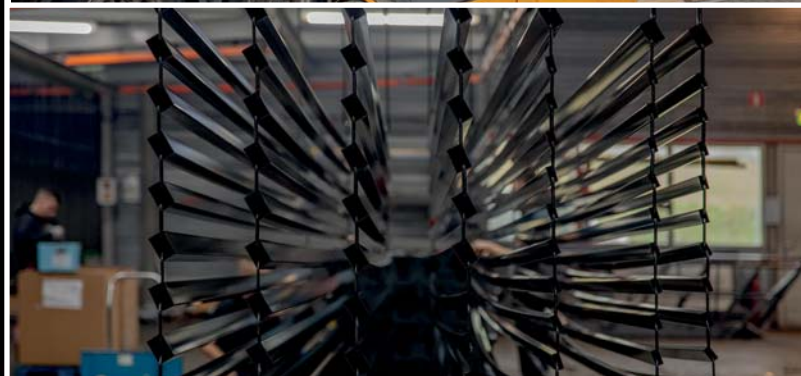
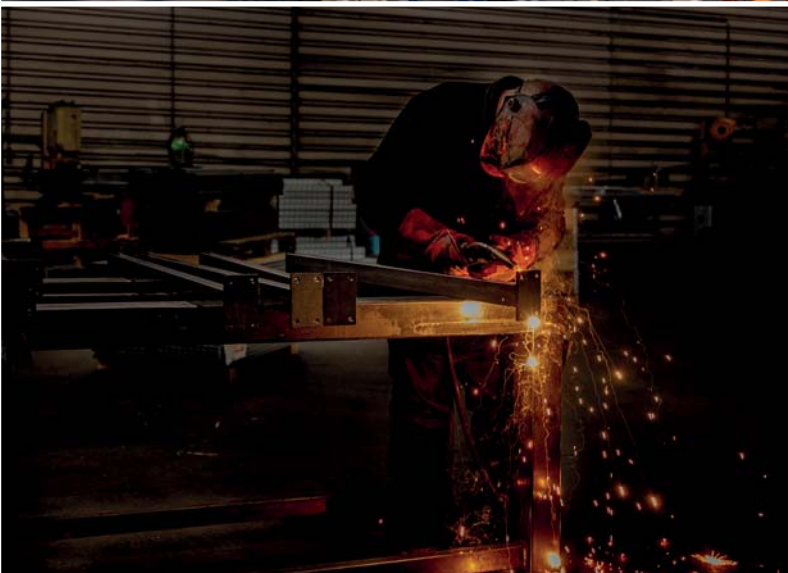
In production, the steel structure is manufactured by rolling profiles, constructing welding products and lasering and bending metal products. All parts that are not galvanized are provided with a protective and glossy finish in the desired RAL color in the powder coating line. Floor plates are sawn to size or other floor parts are purchased. Once all parts are ready, our expedition ensures that the correct fasteners are transported to

the construction site together with the produced construction.

One of our site supervisors will be waiting on location together with the construction team to build and finish the construction until we can leave you satisfied with the result!



**OUR COMPANY IS EN-1090 CERTIFIED**



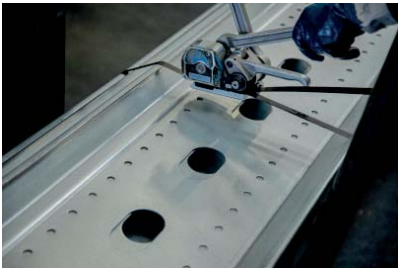
# SUSTAINABILITY



## **OUR SYSTEM STEEL STRUCTURES ARE NATURALLY A SUSTAINABLE ALTERNATIVE TO A TRADITIONAL STEEL STRUCTURE OR CONCRETE FLOOR BECAUSE:**

- Much less energy is used in production, as most of it is cold-rolled.
- The standard perforation pattern makes it easy to move or adapt to a new situation (reusable = circular)
- There is a large second-hand market for our construction type, so reuse and therefore circular application really takes place and it even brings a financial advantage in the form of residual value.
- There is no residual material due to production method of roll forming;
- It is easier to assemble, so no heavy equipment is required;
- It can be transported very efficiently due to its low weight (no air transport);
- Our system steel constructions are designed in such a way that the material is used extremely efficiently. A structure can carry an average of 8–10x its own weight in variable loads!

Since 2024, we are able to offer projects in where we produce the cold-formed beams from 'Green Steel'. This is material produced in a European factory for which certificates are issued for the minimum use of 70% reuse (scrap) material and where the flame blast furnace is powered 100% by renewable energy. This allows a 31% CO2 reduction to be achieved on the production of raw steel material. If you would like to know more about this, we are happy to explain!



In addition to the fact that our product can potentially be used sustainably and that in general the steel market is working hard to become more sustainable, we at Anera also believe it is important to make our personal contribution. We do this, among other things, by investing in making our own factory more sustainable and investing in a greener world. We do this not only by donating to charities such as JustDigIt. Anera is the proud owner of a private forest area located in Baarle-Nassau, the Netherlands. Here we not only aim to maintain and protect local forests, but also to grow the forest area!

**CURIOUS?**

**SCAN THE QR CODE  
AND CHECK OUT  
OUR WORK!**





## COMPANY ADDRESS

### **Anera BV**

Korhoenweg 8-12  
4791-RM Klundert  
Industrial Area Moerdijk Harbour No 405  
The Netherlands

### **Contact**

Info@anera.eu  
+31 (0)168 745 600  
www.anera.eu